

Trust | SMART Home

By: **KlikAan** **KlikUit**[®]

ONLINE HANDLEIDING

Z1 ZIGBEE CONTROL
STATION



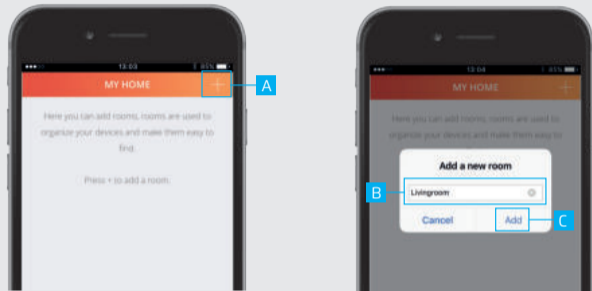
www.trust.com/zigbee

Item 71168 Version 1.0
Visit www.trust.com/zigbee for the latest instructions

Index

1. Add a room	5
1.1 Edit/Delete room	6
2. Connect a ZigBee bulb	7
2.1 Connect a ZigBee Remote	11
2.2 Edit/Delete a device	13
3. Add scenes	14
3.1 Add/Delete action	15
3.2 Add/Delete delays	16
4 Configure timers	17
4.1 Edit/Delete timers	20
5. Connect manually	21

1

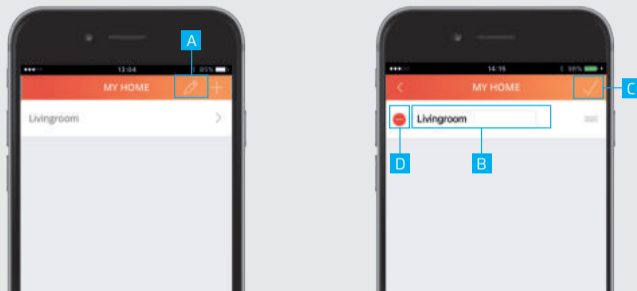


1. Add a room

- A** Press the + button at the top of the screen to add a new room
- B** Fill in a name for the room you want to add.
- C** Press the ADD button to save the new room

5

1.1

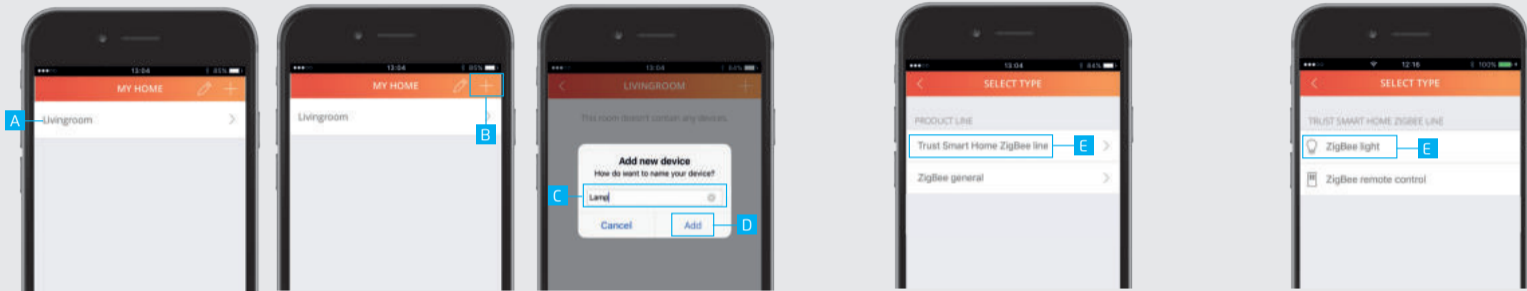


1.1 Edit/Delete room


- A** To edit the name of a room press the pencil button at the top of the screen
- B** Press on the room name to begin editing.
- C** When you are done editing the name press the CONFIRM button.
- D** To delete a room press the DELETE button in front of the room when in editing mode. Press the CONFIRM button to go back to the room overview.

6

2



2. Connect a ZigBee bulb

 Make sure the ZigBee bulb is close to the Control station (Within 4 metres)

A Press on a room name to open it.

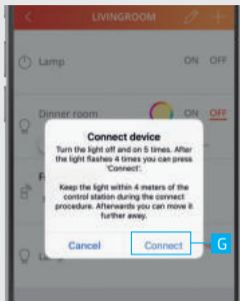
B Press the + button at the top of the screen to add a new device.

C Enter a name for the device you want to add

D Press ADD

E Select Trust Smart Home ZigBee Line and choose for ZigBee light

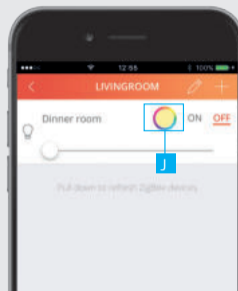
F Put the bulb in connect mode. (Check the manual of the bulb on how to put it in connect mode)



G When the ZigBee device is in connect mode press CONNECT.

H The bulb is now added to your room. You can now control the bulb with the App.

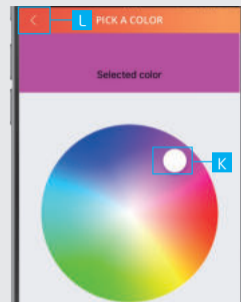
I Use the buttons to control the device.



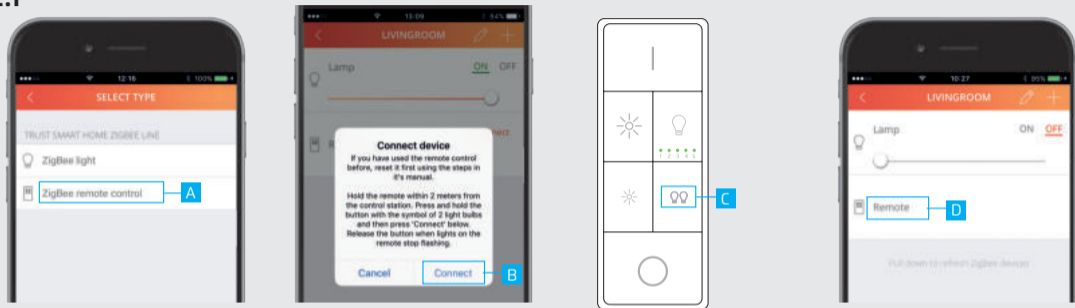
J To change the color of a ZigBee bulb press on the color circle to open the color palette (Only for RGB or Cold/Warm bulb)

K Choose the desired color.

L Press the BACK button to go back to the room.



2.1



2.1 Connect a ZigBee remote

⚠ First reset your ZigBee remote before you connect it to the Z1. (Check the manual of the ZigBee remote on how to reset it)

A Add a new device (See chapter 2) and choose for ZigBee Remote control

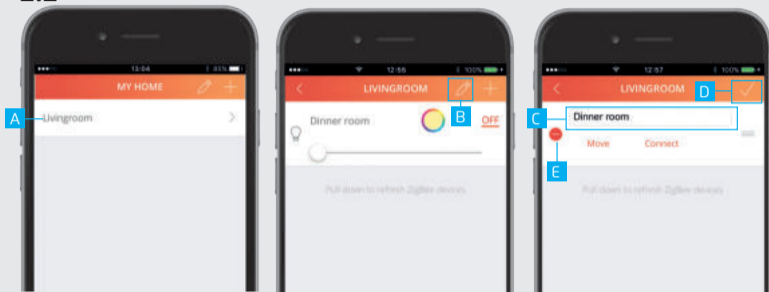
B Press CONNECT in the App

C Press and hold the Smart Group button on the remote and wait until the LEDs under the channels start to blink. Wait for confirmation from the App that the connection succeeded.

D The ZigBee Remote is now connected

⚠ To control a bulb which is already connected with the Control station with the remote the bulb also needs to be connected to the ZigBee Remote. (Check the manual of the ZigBee remote on how to connect it with a bulb) Notice: With the ZYCT-202 ZigBee Remote control RGB and Cold/Warm bulbs can only be turned ON and OFF and can be dimmed.

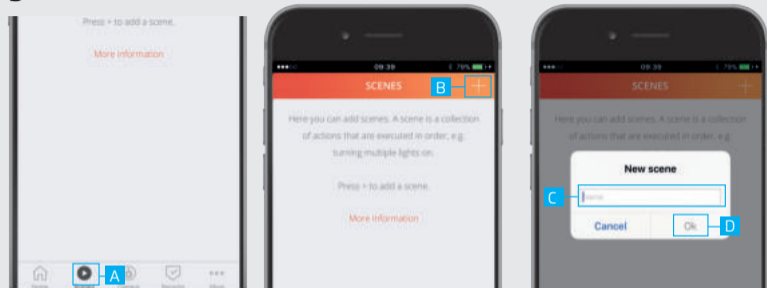
2.2



2.2 Edit/delete device

- A** To edit the name of a device first open the room which contains the device.
- B** Press the pencil button to enter edit mode.
- C** Press on the device name to begin editing.
- D** When you are done editing the name press the confirm button.
- E** To delete a device press the DELETE button in front of the device when in editing mode. Press the CONFIRM button to go back to the device overview.

3

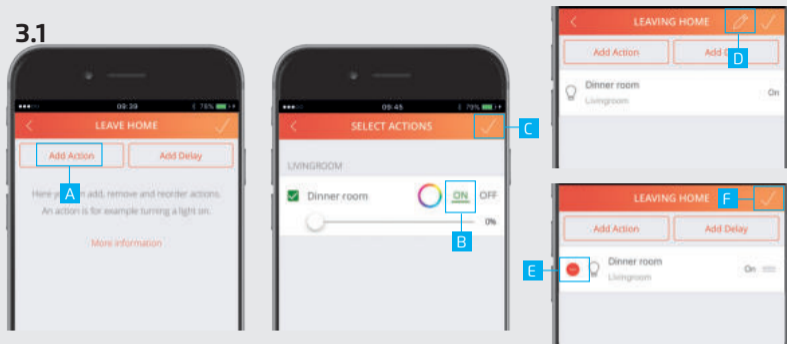


3. Add scenes

With a scene you can trigger different devices at the same time or with a delay.

- A** Press the scene button in the menu bar
- B** Press the + button at the top of the screen to add a new scene.
- C** Fill in a desired name for the scene.
- D** Press OK.

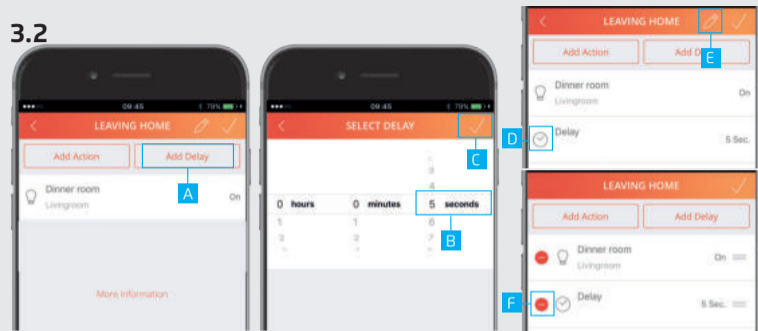
3.1



3.1 Add/delete actions

- A** Press the ADD ACTION button to add actions to the scene.
- B** Add the desired actions for the devices by pressing the buttons.
- C** Press CONFIRM to add the actions to the scene.
- D** By pressing the pencil button you enter edit mode.
- E** Delete an action by pressing the DELETE button.
- F** Press CONFIRM again to save the scene.

3.2

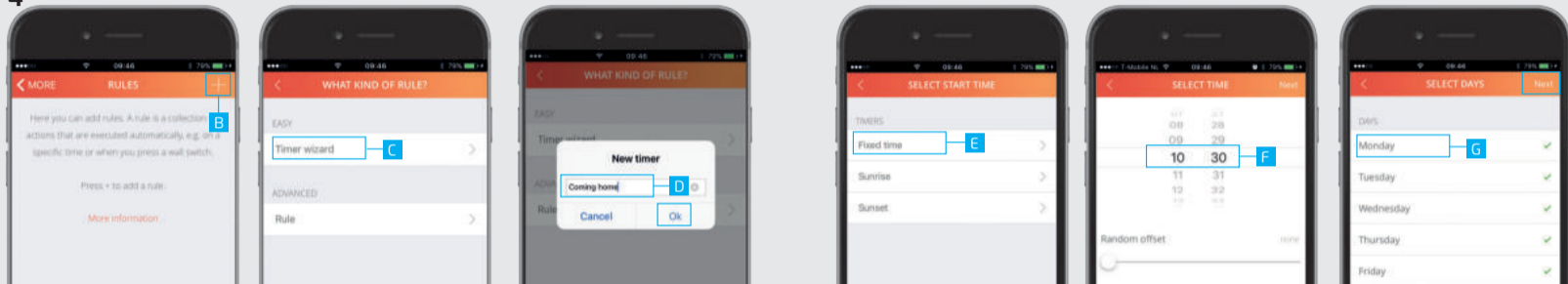


3.2 Add/delete delays

It is possible to add a delay between actions. First add an actions like described in step 3.1

- A** Press the ADD DELAY button.
- B** Choose how long the delay must be by selecting a time period.
- C** Press the CONFIRM button to add the delay to the scene
- D** The delay is now added to your scene.
- E** By pressing the pencil button you enter edit mode.
- F** Press the DELETE button to delete a delay.

4



4 Configure timers

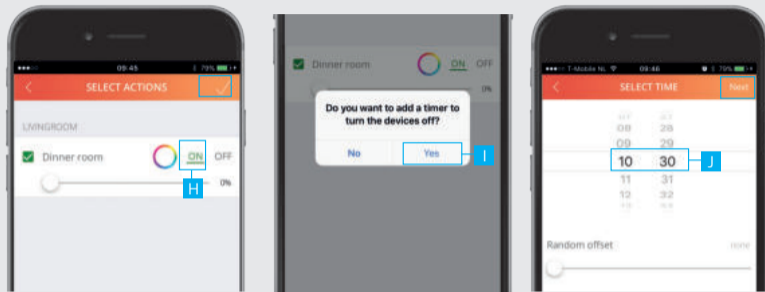
With a timer you can trigger one or multiple devices on a fixed time, Sunrise or Sunset.

- A** Press the Rules button in the menu bar
- B** Press the + button at the top of the screen to add a new timer.
- C** Press on Timer wizard.
- D** Fill in a name for your timer and press OK.

E Choose the kind of start time for the timer. (In this example a fixed time is used)

F Select the desired start time for the timer and press NEXT.

G Choose which days and in which months the timer should be triggered. (By default all days and months are selected). Press NEXT



- H** Choose the desired actions for when the timer is triggered. Press NEXT
- I** A message appears asking if you want to add a timer to turn the devices OFF. Press Yes
- J** Select the time you want the devices to be turned OFF. Press NEXT
- K** The timers have been added to the overview.

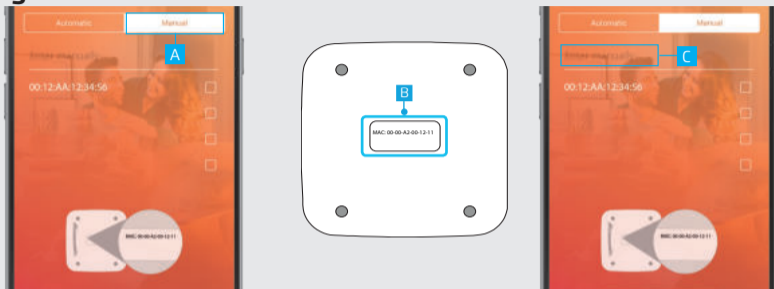
4.1



4.1 Edit/delete timer

- L** Press the pencil button the enter edit mode.
- M** Press on the timer name to begin editing.
- N** When you are done editing the name press the confirm button.
- O** To delete a timer press the DELETE button in front of the timer when in editing mode. Press the CONFIRM button to go back to the timers/rules overview.

5



5. Connect manually

- A** When there is no Z1 found, it is possible to enter the MAC address manually during the registration process. Press the MANUAL button
- B** Look at the bottom of the Z1 for the MAC address.
- C** Press the "Enter manually" field and enter the MAC address for your Z1. Then press NEXT